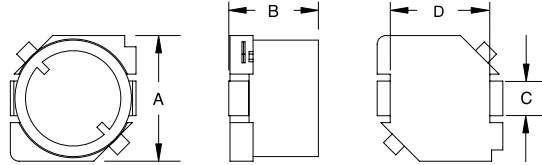
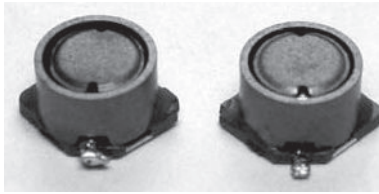


HPBS1045 TYPE

TYPE

HPBS 1045



A: 10.1±0.3
B: 4.5±0.3
C: 3±0.1
D: 6±0.2

SPECIFICATION

| ITEM | L | DCR | IDC |
|----------|----------|---------|---------|
| HPBS1045 | (μH) | MAX.(Ω) | MAX.(A) |
| 100M | 10±20% | 0.0364 | 3.0 |
| 150M | 15±20% | 0.0472 | 2.4 |
| 220M | 22±20% | 0.0591 | 2.1 |
| 330M | 33±20% | 0.0815 | 1.6 |
| 470M | 47±20% | 0.10 | 1.4 |
| 680M | 68±20% | 0.14 | 1.1 |
| 101M | 100±20% | 0.20 | 0.95 |
| 151M | 150±20% | 0.35 | 0.79 |
| 221M | 220±20% | 0.47 | 0.65 |
| 331M | 330±20% | 0.68 | 0.50 |
| 471M | 470±20% | 1.03 | 0.47 |
| 681M | 680±20% | 1.60 | 0.38 |
| 102M | 1000±20% | 2.80 | 0.32 |
| 152M | 1500±20% | 3.40 | 0.22 |

K: ±10% M: ±20%

* Hong can design any part to your requirements with different inductance.

* All parameters as this content presented are subject to final specifications both sides confirmed.